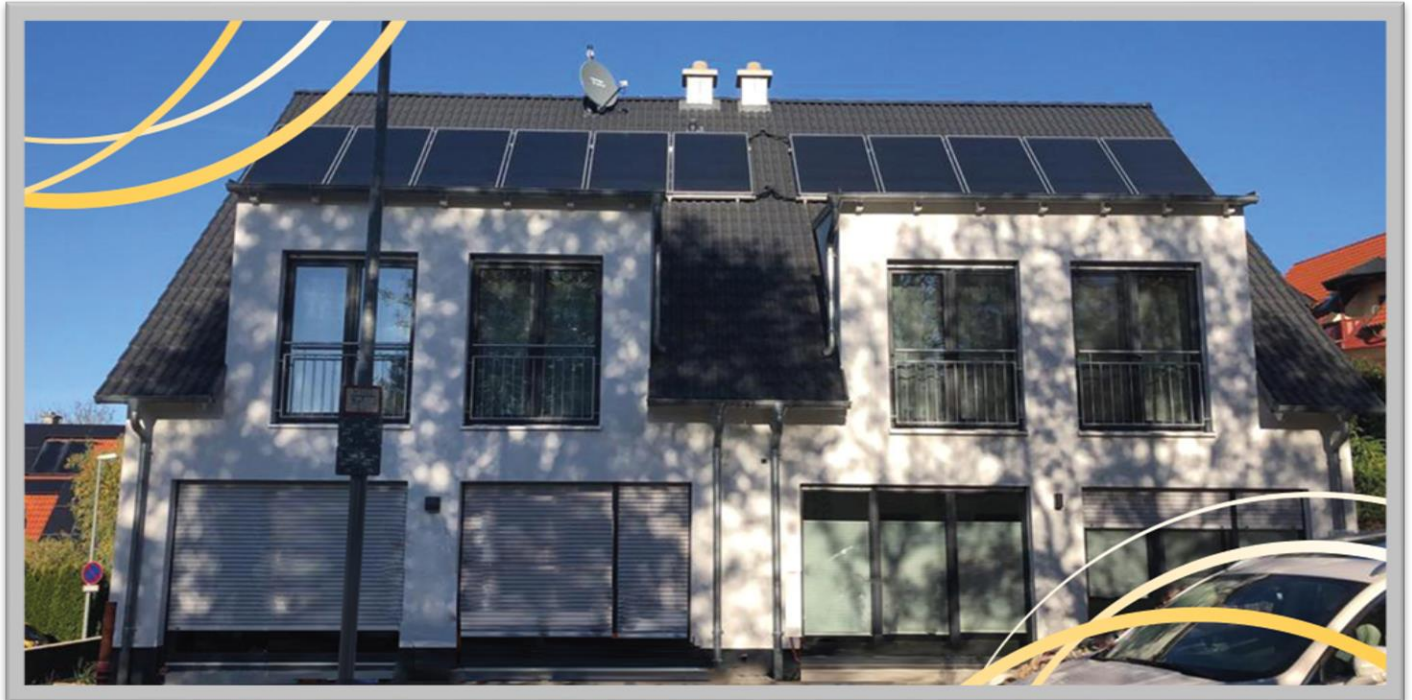


Semi-detached house



Construction of a semi-detached house in Leinburg.

BES BuildingEnergySolutions GmbH
Robert-Koch-Str. 50
D-55129 Mainz
Tel.: +49 (0) 6131 25 06 17-0
Fax: +49 (0) 6131 25 06 17-9
E-Mail: info@bes-eu.com
www.bes-eu.com



82%	Contribution of renewable energy
2.488 kg	Reduction in CO₂ emissions / year
20.554 kWh	Energy savings / year

End year:	February 2018
Gross floor area:	326 m² living space
System:	ERS-System with a heat pump for heating, cooling and domestic hot water preparation, ground heat exchanger in two layers, wall and floor heating and cooling with the register mats system.
Feature:	Controlled ventilation of rooms via ventilation registers covers the heating and cooling load peaks.